



# GAT MONTHLY MEMBERSHIP PROGRESS REPORT

Results as of: 5/31/2022

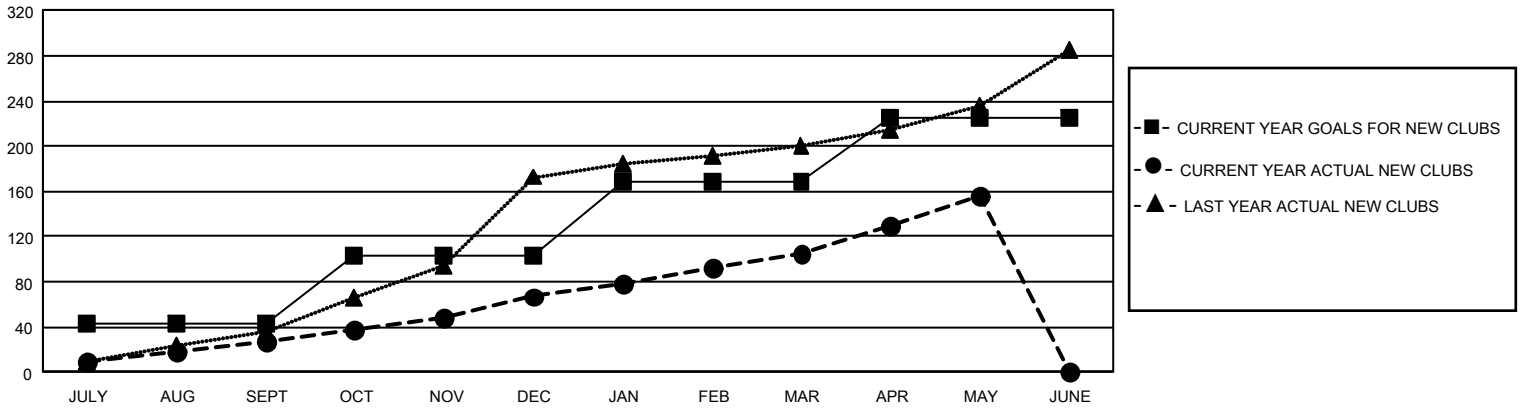
## GAT Constitutional Area 3

REPORT DOES NOT INCLUDE CLUBS IN UNDISTRICTED AREAS.

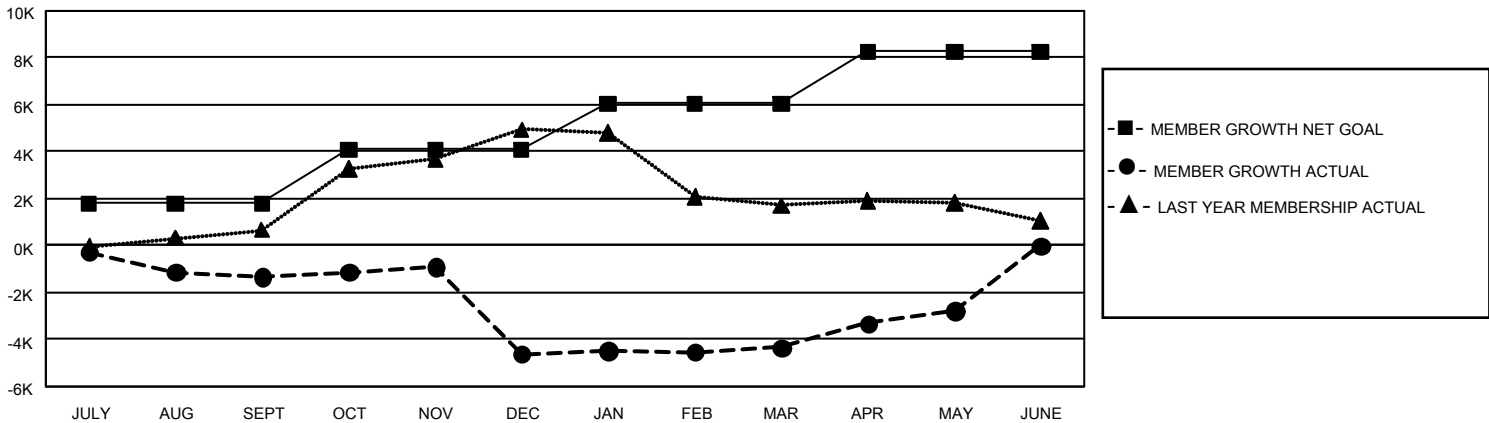
Clubs			
RESULTS FOR 2021-2022			
QUARTER	NEW CLUB GOAL	NEW CLUBS	DROPPED CLUBS
JULY/AUG/SEPT	129	28	106
OCT/NOV/DEC	183	39	113
JAN/FEB/MAR	195	38	41
APR/MAY/JUNE	168	51	5

Members			
RESULTS FOR 2021-2022			
QUARTER	MEMBER GROWTH NET GOAL	MEMBER GROWTH ACTUAL	DROPPED MEMBERS ACTUAL (including transfers)
JULY/AUG/SEPT	1794	3,497	4,365
OCT/NOV/DEC	2298	4,419	7,284
JAN/FEB/MAR	1962	3,555	2,589
APR/MAY/JUNE	2200	3,954	2,154

GOALS AND ACTUAL NEW CLUBS CUMULATIVE



GOALS AND ACTUAL MEMBERS CUMULATIVE



<b>DROPPED CLUBS: 259</b>	2,267 CLUBS OF 4,429 ADDED 1 OR MORE NEW MEMBERS  <a href="#">CLICK HERE FOR CUMULATIVE MEMBERSHIP DATA</a>	<b>GENDER DISTRIBUTION</b>	
		MALE 49,566 (47.76%) FEMALE 54,207 (52.23%) NON BINARY 0 (0.00%) PREFER NOT TO ANSWER 12 (0.01%)	TOTAL FAMILY UNIT MEMBERS 39,037 FAMILY MEMBERS PAYING HALF DUES 21,754
<b>DROPPED MEMBERS</b>			
DECEASED 968 CLUB CANCELLED 3,511 OTHER 11,893 <b>TOTAL 16,372</b>			